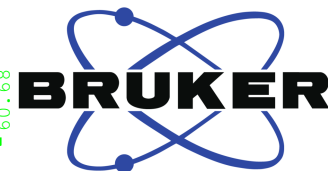


RP107

C13CPD.uc1 CDC13 {C:\700} tds 23

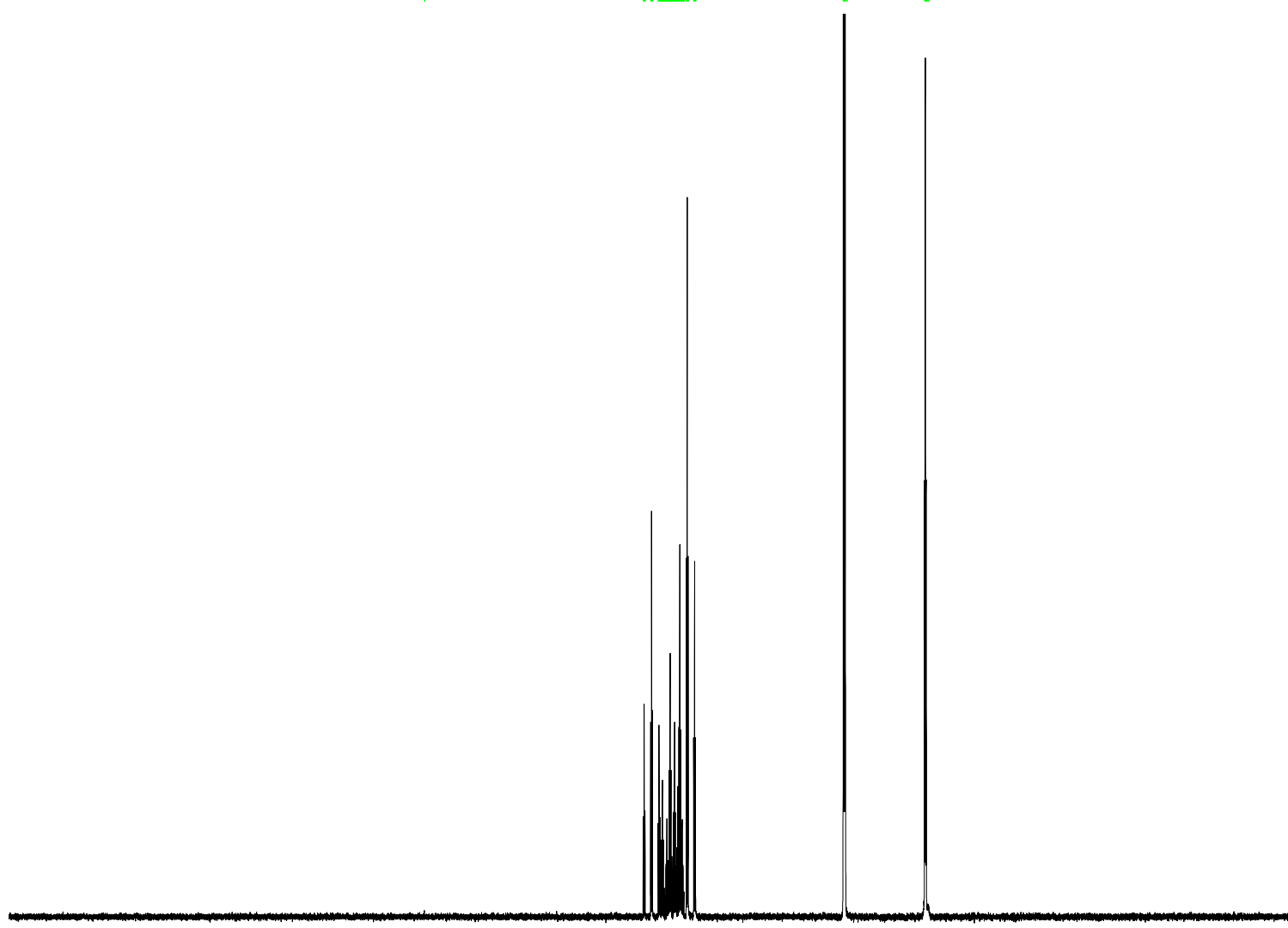
158.96  
116.27  
116.10  
115.92  
114.81  
114.64  
114.46  
113.36  
113.18  
113.01  
112.90  
112.72  
112.71  
112.53  
112.35  
112.34  
112.16  
111.99  
111.84  
111.81  
111.66  
111.51  
111.49  
111.40  
111.33  
111.22  
111.21  
111.03  
110.85  
110.84  
110.66  
110.50  
110.34  
110.32  
110.17  
110.02  
109.99  
109.89  
109.84  
109.72  
109.70  
109.53  
109.32  
109.14  
108.96  
108.85  
108.82  
108.67  
108.52  
108.49  
108.34  
107.87  
107.70  
107.52  
106.43  
106.25  
106.07  
77.27  
77.09  
76.91  
76.58  
61.41  
61.25  
61.10  
60.80  
60.68



Current Data Parameters  
NAME RP107 for 13 C  
EXPNO 11  
PROCNO 1

F2 - Acquisition Parameters  
Date\_ 20210813  
Time 22.24 h  
INSTRUM AVNEO700  
PROBHD Z154039\_0001 (  
PULPROG zgpg30  
TD 74190  
SOLVENT CDC13  
NS 1024  
DS 4  
SWH 47169.813 Hz  
FIDRES 1.271595 Hz  
AQ 0.7864140 sec  
RG 101  
DW 10.600 usec  
DE 19.05 usec  
TE 300.2 K  
D1 2.00000000 sec  
D11 0.03000000 sec  
TD0 1  
SFO1 176.1242799 MHz  
NUC1 13C  
P0 3.57 usec  
P1 10.70 usec  
PLW1 37.20000076 W  
SFO2 700.3528014 MHz  
NUC2 1H  
CPDPRG[2] waltz65  
PCPD2 80.00 usec  
PLW2 11.00000000 W  
PLW12 0.26003000 W  
PLW13 0.13057999 W

F2 - Processing parameters  
SI 65536  
SF 176.1031267 MHz  
WDW EM  
SSB 0  
LB 1.00 Hz  
GB 0  
PC 1.40



220 200 180 160 140 120 100 80 60 40 20 ppm